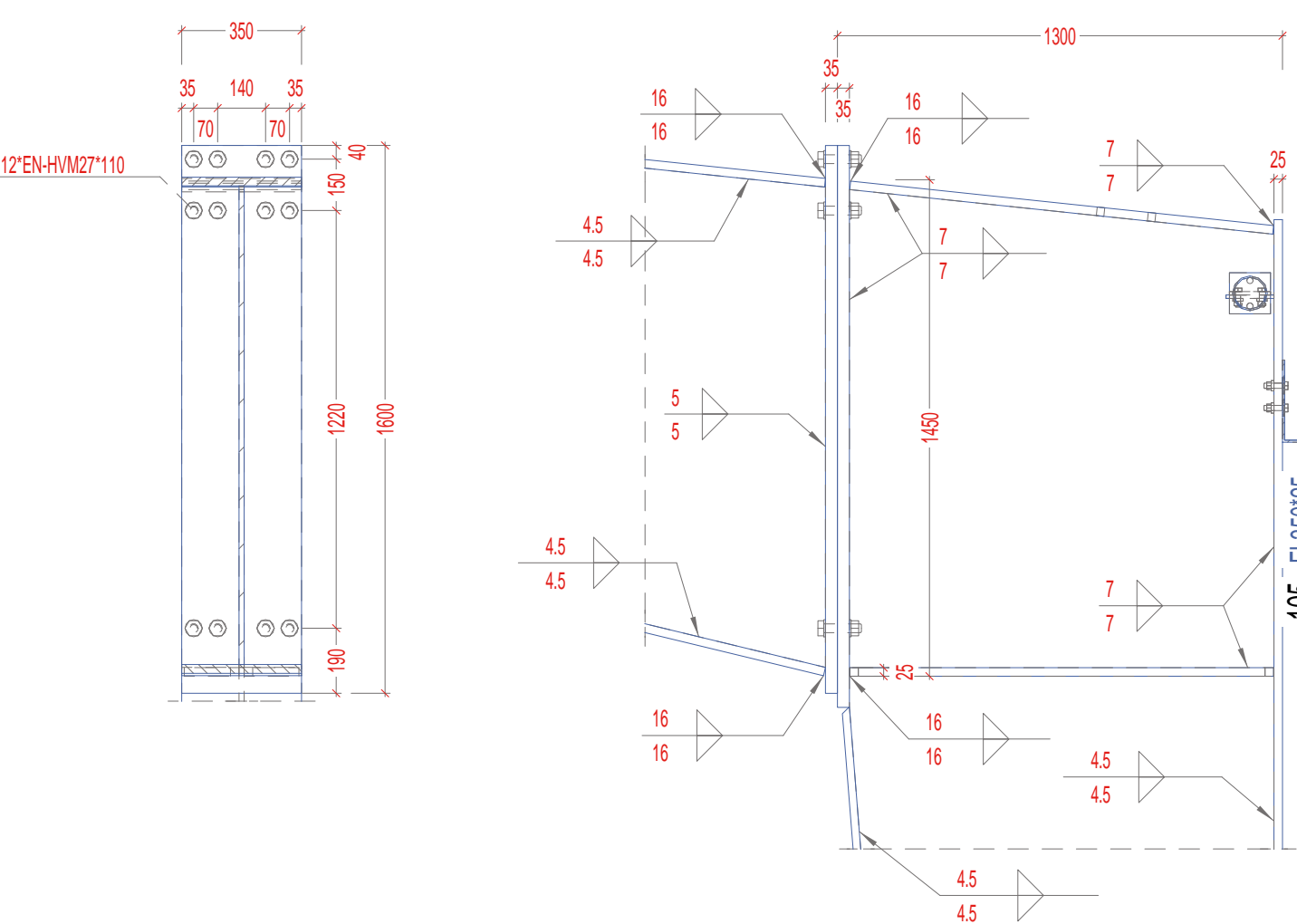
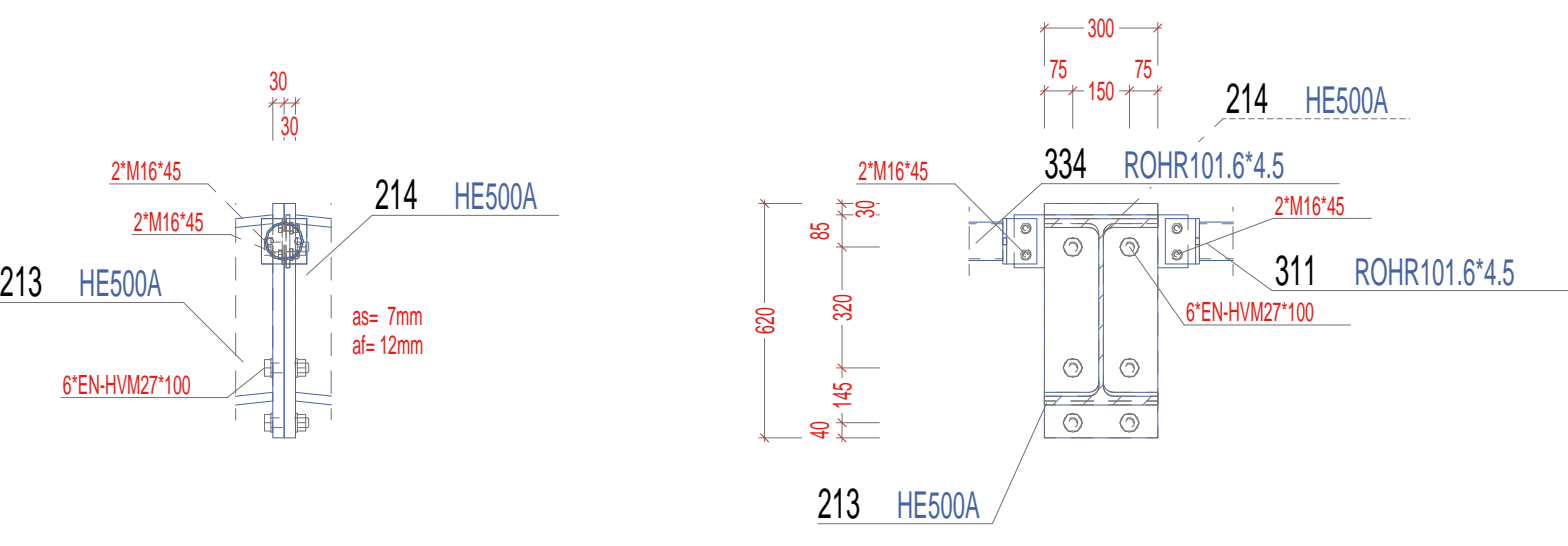


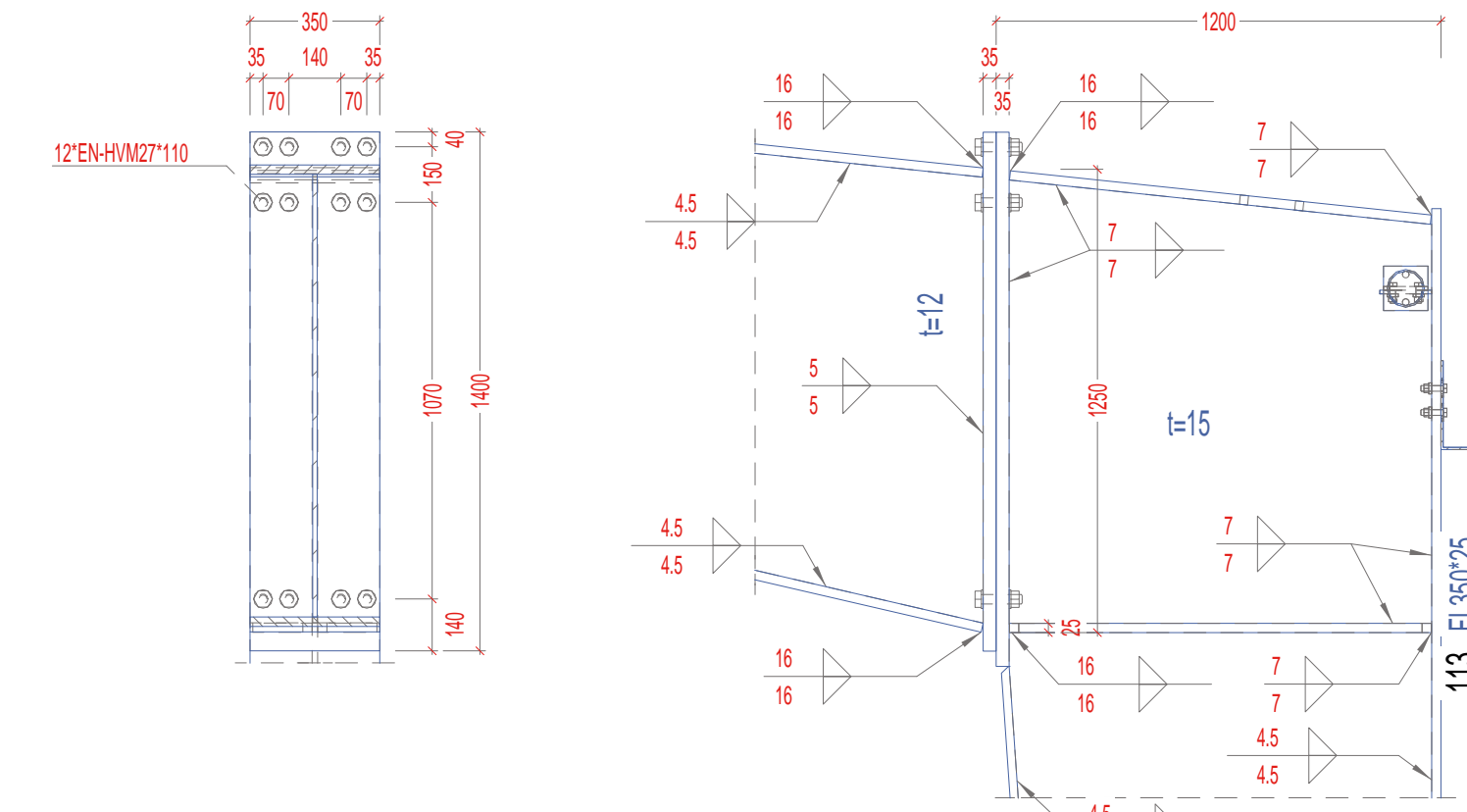
Rahmenecke in Achse D (R3.2), 1:20



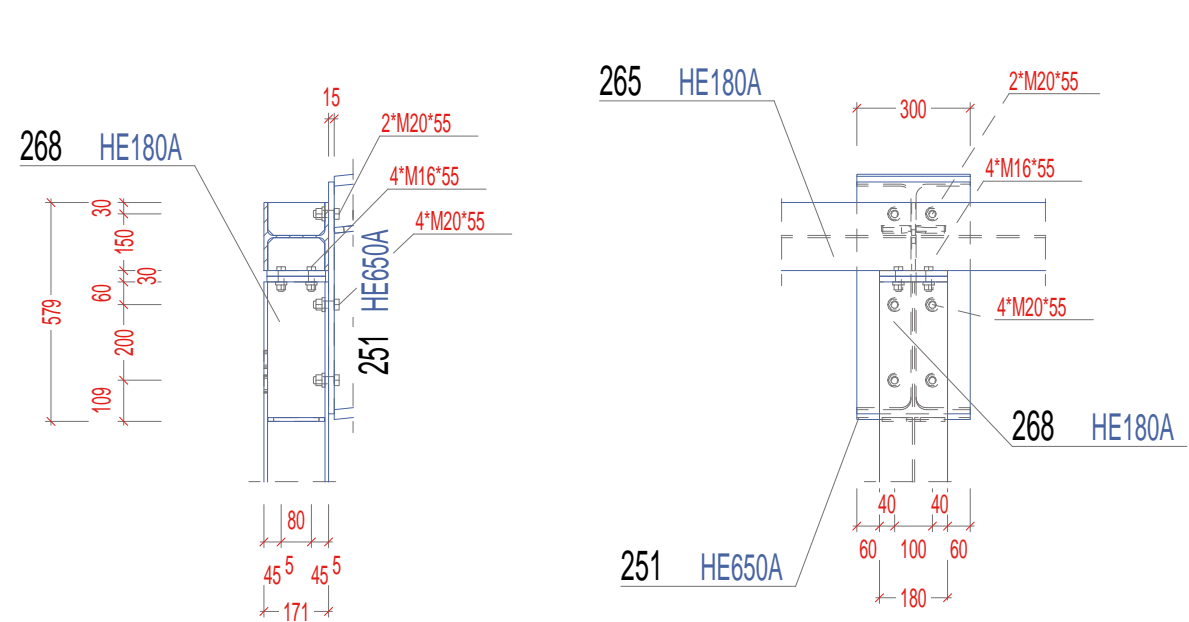
Firststoss in Achse C (R4.1), 1:20



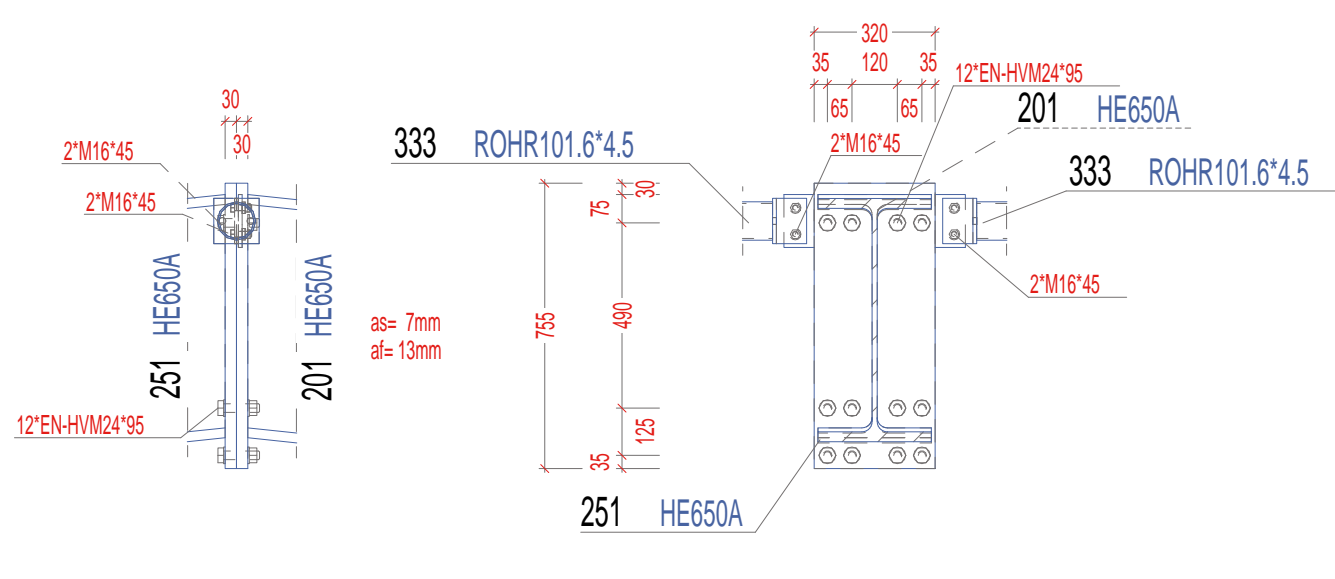
Rahmenecke in Achse B & D (R4.2), 1:20



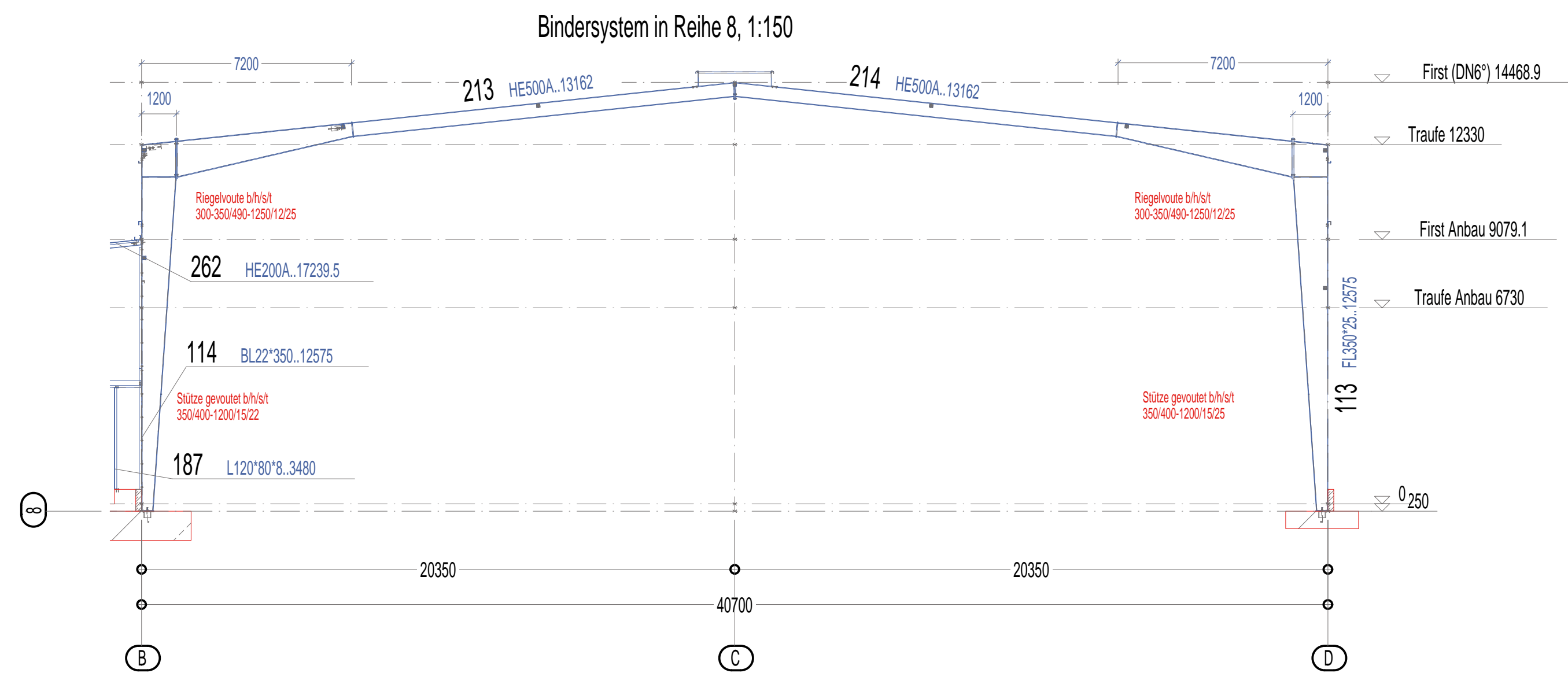
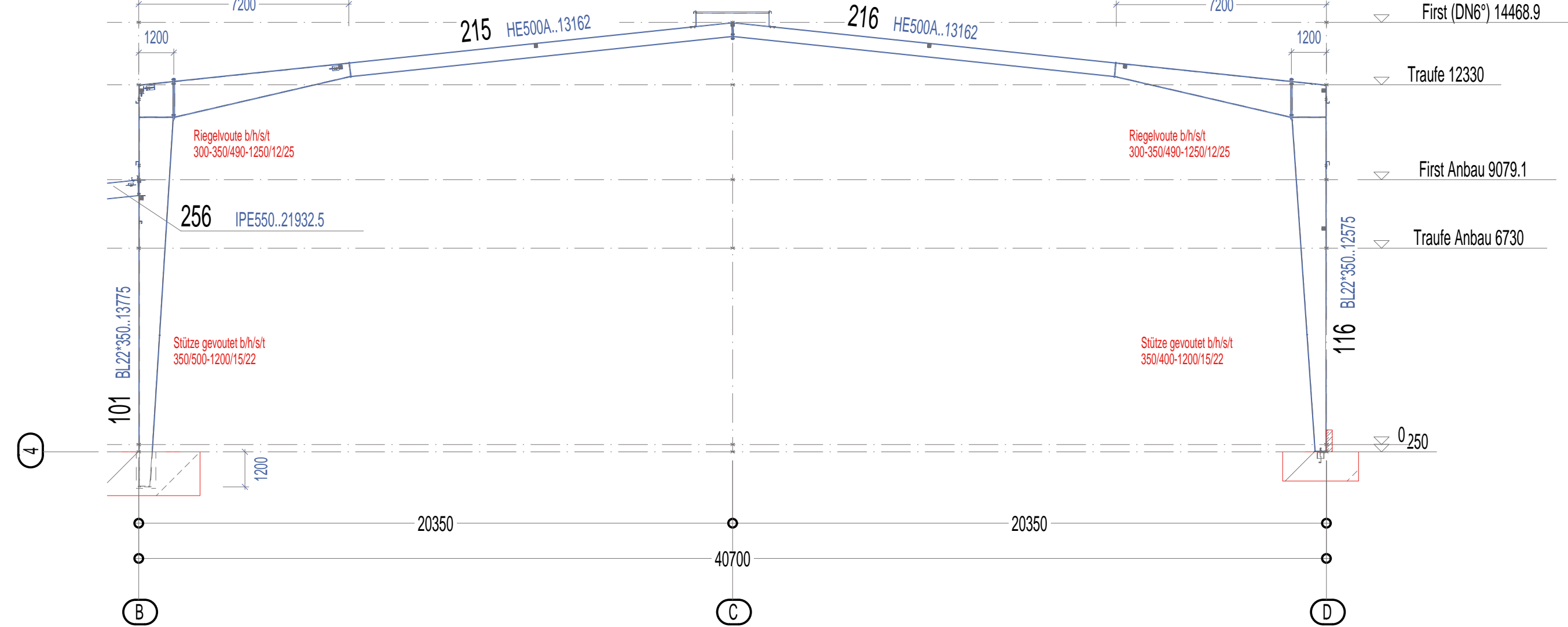
Anschluss Achse B, 5+7, 1:20



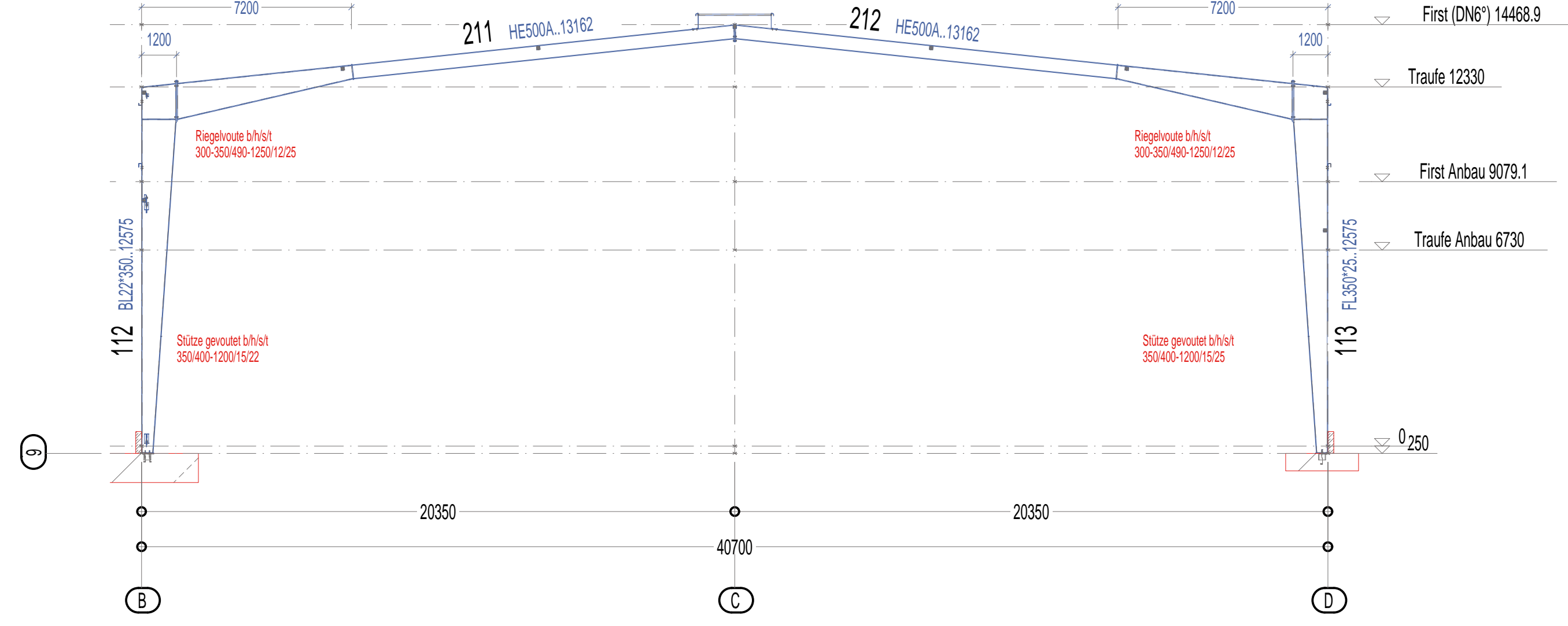
Firststoss in Achse C (R3.1), 1:20



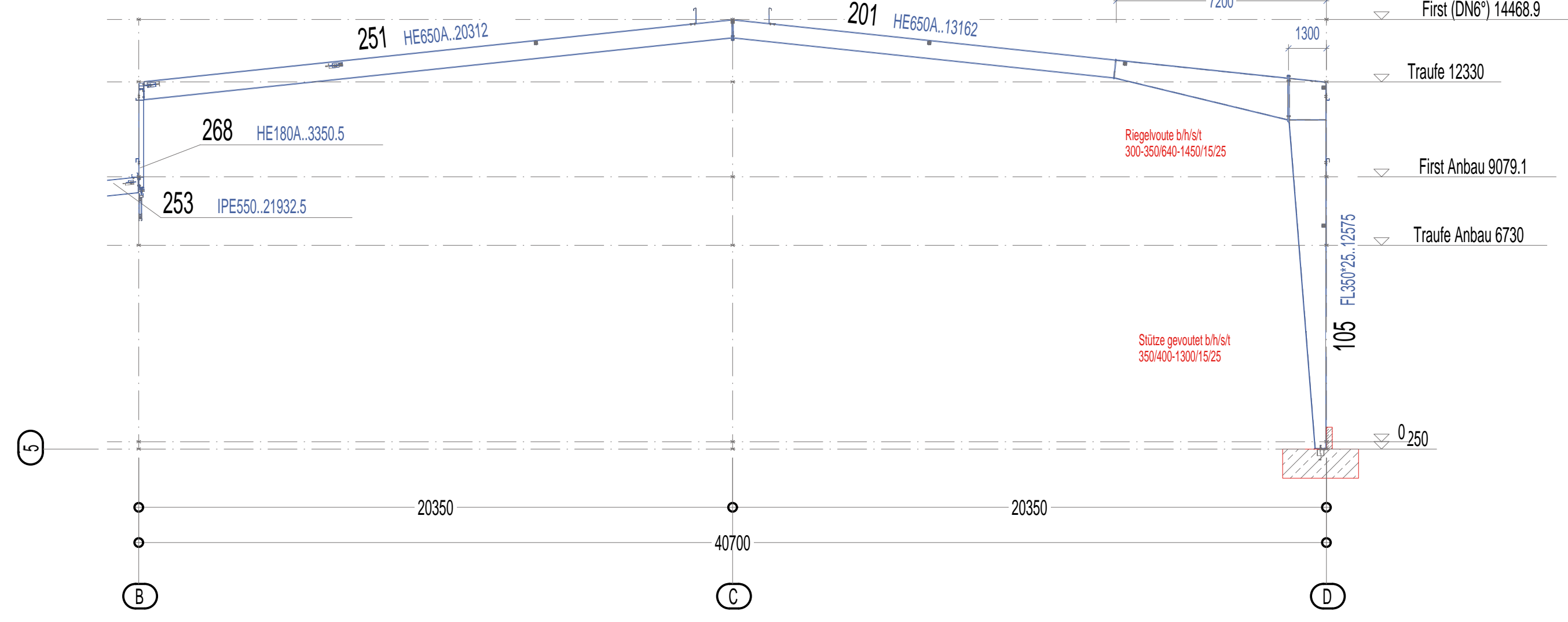
Bindersystem in Reihe 4, 1:150



Bindersystem in Reihe 9, 1:150



Bindersystem in Reihe 5, 1:150



Erforderliche Anziehmomente, Vorspannkraft und Drehwinkel nach DIN 18800 Teil 7, 09.2002											
1	2	Vorgespannen der hochfesten Schrauben (St8.10) nach dem				Vorgespannen der hochfesten Schrauben (St8.10) nach dem				7	8
		3		4		5		6			
		Erforderliche Vorspannkraft $F_p$		Erforderliche Drehmoment $M_D$		Erforderliche Vorspannkraft $F_p$		Erforderliche Drehmoment $M_D$			
Schnur	Einfach- oder Doppelschraub- Kall	Hochfestes Guss- oder Stahlbolzen mit Zugankerbolzen		Hochfestes Guss- oder Stahlbolzen mit Zugankerbolzen		Hochfestes Guss- oder Stahlbolzen mit Zugankerbolzen		Hochfestes Guss- oder Stahlbolzen mit Zugankerbolzen		Klemmweite $l_k$	Drehwinkel $\alpha$
		Zugankerbolzen		Zugankerbolzen		Zugankerbolzen		Zugankerbolzen			
		M32	mm	mm	mm	M32	mm	mm	mm		
		mm	mm	mm	mm	mm	mm	mm	mm	mm	mm
		mm	mm	mm	mm	mm	mm	mm	mm	mm	mm
		mm	mm	mm	mm	mm	mm	mm	mm	mm	mm
		mm	mm	mm	mm	mm	mm	mm	mm	mm	mm
		mm	mm	mm	mm	mm	mm	mm	mm	mm	mm
		mm	mm	mm	mm	mm	mm	mm	mm	mm	mm
		mm	mm	mm	mm	mm	mm	mm	mm	mm	mm
		mm	mm	mm	mm	mm	mm	mm	mm	mm	mm
		mm	mm	mm	mm	mm	mm	mm	mm	mm	mm
		mm	mm	mm	mm	mm	mm	mm	mm	mm	mm
		mm	mm	mm	mm	mm	mm	mm	mm	mm	mm
		mm	mm	mm	mm	mm	mm	mm	mm	mm	mm
		mm	mm	mm	mm	mm	mm	mm	mm	mm	mm
		mm	mm	mm	mm	mm	mm	mm	mm	mm	mm
		mm	mm	mm	mm	mm	mm	mm	mm	mm	mm
		mm	mm	mm	mm	mm	mm	mm	mm	mm	mm
		mm	mm	mm	mm	mm	mm	mm	mm	mm	mm
		mm	mm	mm	mm	mm	mm	mm	mm	mm	mm
		mm	mm	mm	mm	mm	mm	mm	mm	mm	mm
		mm	mm	mm	mm	mm	mm	mm	mm	mm	mm
		mm	mm	mm	mm	mm	mm	mm	mm	mm	mm
		mm	mm	mm	mm	mm	mm	mm	mm	mm	mm
		mm	mm	mm	mm	mm	mm	mm	mm	mm	mm
		mm	mm	mm	mm	mm	mm	mm	mm	mm	mm
		mm	mm	mm	mm	mm	mm	mm	mm	mm	mm
		mm	mm	mm	mm	mm	mm	mm	mm	mm	mm
		mm	mm	mm	mm	mm	mm	mm	mm	mm	mm
		mm	mm	mm	mm	mm	mm	mm	mm	mm	mm
		mm	mm	mm	mm	mm	mm	mm	mm	mm	mm
		mm	mm	mm	mm	mm	mm	mm	mm	mm	mm
		mm	mm	mm	mm	mm	mm	mm	mm	mm	mm
		mm	mm	mm	mm	mm	mm	mm	mm	mm	mm
		mm	mm	mm	mm	mm	mm	mm	mm	mm	mm
		mm	mm	mm	mm	mm	mm	mm	mm	mm	mm
		mm	mm	mm	mm	mm	mm	mm	mm	mm	mm
		mm	mm	mm	mm	mm	mm	mm	mm	mm	mm
		mm	mm	mm	mm	mm	mm	mm	mm	mm	mm
		mm	mm	mm	mm	mm	mm	mm	mm	mm	mm
		mm	mm	mm	mm	mm	mm	mm	mm	mm	mm
		mm	mm	mm	mm	mm	mm	mm	mm	mm	mm
		mm	mm	mm	mm	mm	mm	mm	mm	mm	mm
		mm	mm	mm	mm	mm	mm	mm	mm	mm	mm
		mm	mm	mm	mm	mm	mm	mm	mm	mm	mm
		mm	mm	mm	mm	mm	mm	mm	mm	mm	mm
		mm	mm	mm	mm	mm	mm	mm	mm	mm	mm
		mm	mm	mm	mm	mm	mm	mm	mm	mm	mm
		mm	mm	mm	mm	mm	mm	mm	mm	mm	mm
		mm	mm	mm	mm	mm	mm	mm	mm	mm	mm
		mm	mm	mm	mm	mm	mm	mm	mm	mm	mm
		mm	mm	mm	mm	mm	mm	mm	mm	mm	mm
		mm	mm	mm	mm	mm	mm	mm	mm	mm	mm
		mm	mm	mm	mm	mm	mm	mm	mm	mm	mm
		mm	mm	mm	mm	mm	mm	mm	mm	mm	mm
		mm	mm	mm	mm	mm	mm	mm	mm	mm	mm
		mm	mm	mm	mm	mm	mm	mm	mm	mm	mm
		mm	mm	mm	mm	mm	mm	mm	mm	mm	mm
		mm	mm	mm	mm	mm	mm	mm	mm	mm	mm
		mm	mm	mm	mm	mm	mm	mm	mm	mm	mm
		mm	mm	mm	mm	mm	mm	mm	mm	mm	mm
		mm	mm	mm	mm	mm	mm	mm	mm	mm	mm
		mm	mm	mm	mm	mm	mm	mm	mm	mm	mm
		mm	mm	mm	mm	mm	mm	mm	mm	mm	mm
		mm	mm	mm	mm	mm	mm	mm	mm	mm	mm
		mm	mm	mm	mm	mm	mm	mm	mm	mm	mm
		mm	mm	mm	mm	mm	mm	mm	mm	mm	mm
		mm	mm	mm	mm	mm	mm	mm	mm	mm	mm
		mm	mm	mm	mm	mm	mm	mm	mm	mm	mm
		mm	mm	mm	mm	mm	mm	mm	mm	mm	mm
		mm	mm	mm	mm	mm	mm	mm	mm	mm	mm
		mm	mm	mm	mm	mm	mm	mm	mm	mm	mm
		mm	mm	mm	mm	mm	mm	mm	mm	mm	mm
		mm	mm	mm	mm	mm	mm	mm	mm	mm	mm
		mm	mm	mm	mm	mm	mm	mm	mm	mm	mm
		mm	mm	mm	mm	mm	mm	mm	mm	mm	mm
		mm	mm	mm	mm	mm	mm	mm	mm	mm	mm
		mm	mm	mm	mm	mm	mm	mm	mm	mm	mm
		mm	mm	mm	mm	mm	mm	mm	mm	mm	mm
		mm	mm	mm	mm	mm	mm	mm	mm	mm	mm
		mm	mm	mm	mm	mm	mm	mm	mm	mm	mm
		mm	mm	mm	mm	mm	mm	mm	mm	mm	mm
		mm	mm	mm	mm	mm	mm	mm	mm	mm	mm
		mm	mm	mm	mm	mm	mm	mm	mm	mm	mm
		mm	mm	mm	mm	mm	mm	mm	mm	mm	mm
		mm	mm	mm	mm	mm	mm	mm	mm	mm	mm
		mm	mm	mm	mm	mm	mm	mm	mm	mm	mm
		mm	mm	mm	mm	mm	mm	mm</			